



3. How Are Steel Cans Recycled?

Recycling Facilities

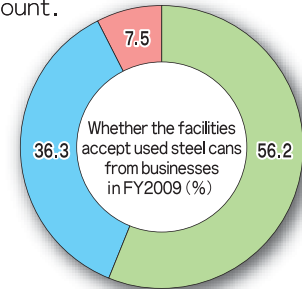
Recently, the ratio of the part of officeworkers' union is decreasing, and private companies are increasing.

	FY2009		FY2003		FY1998	
	Wards and cities	rate (%)	Wards and cities	rate (%)	Wards and cities	rate (%)
Wards and cities	290	42.5	294	44.9	260	48.1
Part of officeworkers' union	134	19.6	157	24.0	95	17.6
Private companies etc.	244	35.7	228	34.8	181	33.5
Public corporation etc.	3	0.4	5	0.8	4	0.7
Unknown	12	1.8	—	—	—	—
Total	683	100.0	655	100.0	540	100.0

Note. The questionnaire in FY2009 is single answer question, and in FY2003 and FY1998 was multiple answers question.

Whether the facilities accept used steel cans from businesses

56.2% of facilities accept used steel cans from businesses. The ratio of amount varies, but about 30% of facilities answer steel cans from businesses account for less than 10% of total processing amount.



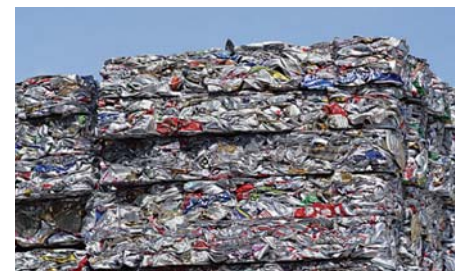
Legend:
■ Accept
■ Do not accept
■ Unknown

Forms after Selection/Processing of Cans

About 90% of steel cans are pressed.

	FY2009		FY2003		FY1998	
	Wards and cities	rate (%)	Wards and cities	rate (%)	Wards and cities	rate (%)
Press (Block-shape)	602	88.1	573	87.5	439	81.3
Round cans etc.	49	7.2	38	5.8	40	7.4
Shredder	18	2.6	29	4.4	27	5.0
Pressing individual cans	3	0.4	2	0.3	8	1.5
No processing	7	1.0	—	—	—	—
Unknown	4	0.6	13	2.0	26	4.8
Total	683	100.0	655	100.0	540	100.0

Note. [No processing] is added since FY2009.



Pressed steel cans

Recommended Selection and Processing Forms of Steel Cans

The following conditions are necessary to smoothly recycle steel cans as resources:

1) Conformity to the segregation standard specified in the Containers and Packaging Recycling Law.

Steel cans are classified as steel containers in the Containers and Packaging Recycling Law. The applicable segregation and collection standard in the Ministerial Ordinance is as follows:

- ① A quantity approximately equal to one 10-ton truck capacity
- ② Compressed condition
- ③ Containers and packages made of other materials are not included
- ④ Other than containers and packages, no foreign matter is attached or mixed
- ⑤ Containers other than high-pressure gas containers have been cleaned
- ⑥ For high-pressure gas containers, the contents and any removable covers and pushbuttons for spraying are removed.

2) Conformity with the steel can scrap standard

Scrap steel cans are classified as C press and C shredder in the "Uniform Standards of Ferrous Scraps (revised in June 2008)." The sizes and other details of the pressed blocks are specified as shown in the figure to the right.

3) Steel cans must not be wet nor rust

Scrap with high water content and rust cause problems in the steel manufacturing process, and are considered low-quality scrap.

Proper steel can press

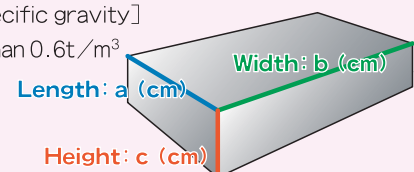
Source: The Japan ferrous raw materials association, "Uniform Standards of Ferrous Scraps"

[Size]

- Maximum Length ≤ 80 (cm)
- 60 (cm) $\leq a+b+c \leq 180$ (cm)

[Bulk specific gravity]

- More than $0.6t/m^3$



* Foreign materials should not contained